

CAPITAL PROJECTS SANTA ROSA JUNIOR COLLEGE

Official Newsletter



Ribbon cutting ceremony at the opening of the Lindley Center for STEM Education.

IN THIS ISSUE:

LINDLEY CENTER FOR STEM
EDUCATION RIBBON CUTTING
CEREMONY

SHONE FARM RECENTLY
COMPLETED PROJECTS
FUNDED BY MEASURE H

SRJC PETALUMA OUTDOOR
FITNESS COURT GRAND
OPENING & RIBBON CUTTING

PLUS SRJC ROSELAND &
TAUZER

Lindley Center for STEM Education Ribbon Cutting Ceremony

On Friday, January 26, 2024, Santa Rosa Junior College celebrated the opening of the Lindley Center for STEM Education with a ribbon cutting ceremony. The three-story, 95,000 square foot building named after SRJC Board of Trustees member W. Terry Lindley began construction in October 2020 and opened for instruction for the Spring 2024 semester.

The Center is the new location for the Mathematics, Chemistry, Physics, Engineering, and Applied Technology departments, as well as integrated student services and supports like MESA (Math, Engineering, Science Achievement). The sleek design enhances learning and socializing on all three floors, particularly with the Learning Staircase, where SRJC students can work together in groups or study individually.

CONTINUES ON PAGE 3...

FOLLOW US ON SOCIAL MEDIA:



SRJC Shone Farm Recently Completed Projects

There are several capital projects that were recently completed at SRJC Shone Farm, among which are the the Ag Portables HVAC and Plumbing Project, the Produce Processing Facility Septic Tank Project, and the Produce Processing Facility Coolers Project. Shone Farm is one of the largest agricultural sites in the California Community Colleges system. The recently completed projects at Shone Farm, funded by Measure H and state grants, will improve the learning environment for students, faculty, and staff. The Alvin J. Hansen Sustainable Agriculture Facility, the produce processing facility, provides the appropriate technologies to store and process fresh and safe organic and sustainable produce.



View of the Alvin J. Hansen Sustainable Agriculture Facility coolers at SRJC's Shone Farm.

SRJC Petaluma Fitness Court Grand Opening & Ribbon Cutting

The Petaluma Outdoor Fitness Court has been successfully installed at SRJC's Petaluma Campus. The new outdoor fitness facility recently installed lights and fencing to provide users with illumination and improve safety when it gets dark. The facility aims to provide students



The Petaluma Outdoor Fitness Court fully installed.

the equipment needed to motivate them to stay fit and healthy. The grand opening & ribbon cutting celebration, which will include fitness class demos, fun challenges for staff and students, and an appearance by Rosco (SRJC's mascot) will take place on Wednesday, March 27, 2024, at the SRJC Petaluma Fitness Center, beginning at 12:00PM.



SRJC Chemistry Club students making liquid nitrogen ice cream.

While construction on the Lindley Center for STEM Education building itself was completed and the building has been in use for instruction since January, landscaping work continues on the exterior through March. Completion of irrigation, soil amendment, planting and decomposed granite are proceeding as weather allows. The nearby Bech Hall was recently demolished, so work on earthworks, walkways, and hydroseeding will begin.

Key Building Features:

- A new Innovation Center
- A new STEM Success Center
- A meeting space for various student clubs in and outside of STEM
- Community spaces fostering active learning
- Student-centered spaces (Learning Staircase, etc.)

...CONTINUES FROM COVER

Among the highlights of the ribbon cutting ceremony was a congratulatory video by NASA astronaut Colonel Nicole Mann, the first Native American woman in space and a resident of Petaluma, CA.

After the ceremony, attendees were invited to explore and experience activities within the Center hosted by SRJC student clubs, including liquid nitrogen ice cream served by the SRJC Chemistry Club.



Sidewalk leading to the entrance of the Lindley Center for STEM Education building along Elliott Ave.

- Expanded chemistry and physics labs
- New large lecture hall
- Third floor terrace with stunning views of campus

SRJC Roseland Modernization Project Update



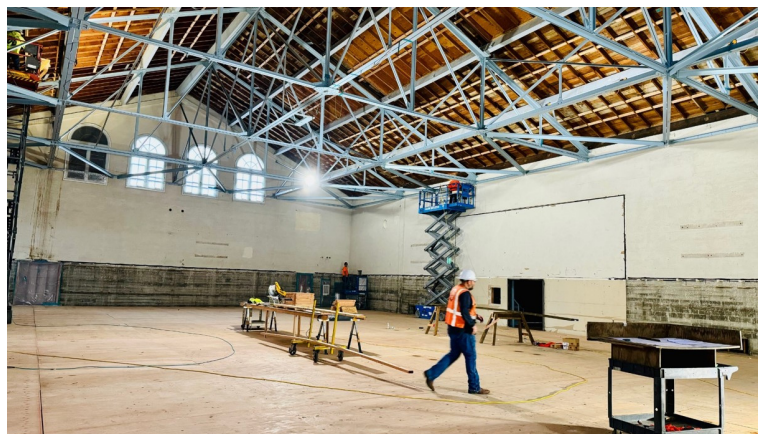
Architectural rendering of SRJC Roseland's Welcome Center part of the Modernization Project Phase 2.

Following the acquisition of the SRJC Roseland property in 2022, construction began May 2023. Formerly called the SRJC Southwest Santa Rosa Center, SRJC Roseland is situated on 9.5 acres in the southwest corner of Santa Rosa, near the city's current limits. Phase 1 of the Modernization Project is nearing completion, which includes tearing down old irreparable buildings, installation of electric vehicle chargers, paving and striping of new parking lots, paving of the entrance and new walkways, storm drain connection, utilities upgrades, and installing new circuit and wire data infrastructure. Phase 2 will include the construction of a new student welcome center.

Tauzer Gymnasium Modernization Project Construction Starts

Construction started on the Tauzer Gymnasium Modernization Project in January which includes gym abatement and demolition, interior pool demolition and backfill, and seismic retrofit framing. The project is scheduled to last about two years, with an expected completion date of fall 2025.

Tauzer Gymnasium was built in 1935 and last remodeled in 1983. The multipurpose facility has long been at the center of SRJC's kinesiology classes such as yoga, dance, fencing, aerobics, tai chi, and body conditioning.



Interior view of the seismic retrofit framing for Tauzer Gymnasium.

Email Capital Projects Newsletter questions or comments to:
Glen Salazar, Administrative Assistant III, Capital Projects: gsalazar@santarosa.edu